



**AG IN THE
CLASSROOM**

Traveling Trunks

An interactive experience
that comes to you!



OUR GOAL

As part of the Destination Ag program, traveling trunks were developed to teach children throughout the entire state of Georgia about agriculture and natural resources.

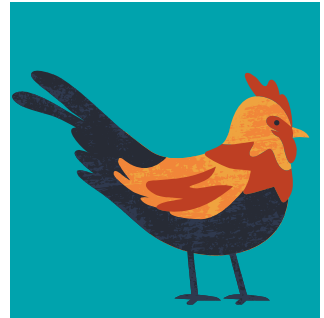
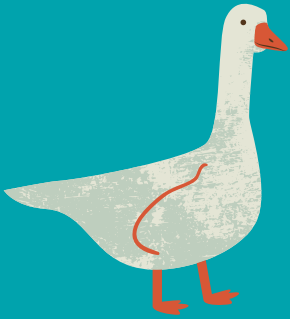
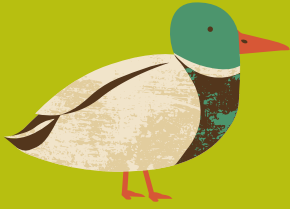
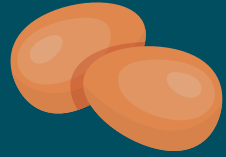
CONTACT

Contact your local Farm Bureau agent to schedule a visit to your classroom today!

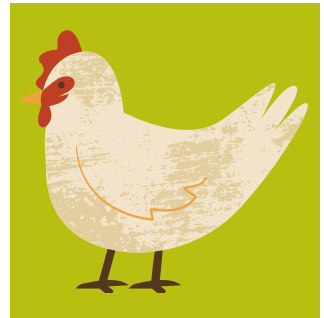
YOUR CLASSROOM

- Traveling trunks are specifically designed to allow a hands-on experience to be brought into any classroom!
- Georgia Farm Bureau houses the trunks at designated location within each of their ten regions.
- Volunteers or local county office members can bring the trunks and present the provided lessons to school groups.
- Relax as your students are engaged in a grade-specific & standards-linked interactive lesson.

THE POULTRY EXPRESS



INTERACTIVE
LESSONS ON
GEORGIA'S #1
INDUSTRY



Department of Poultry Science
College of Agricultural & Environmental Sciences
UNIVERSITY OF GEORGIA



THE POULTRY EXPRESS



WHAT IS IT?

The Poultry Express is an online toolkit consisting of fun, educational, and interactive activities and lessons for elementary level students. It is accompanied by a bag filled with books, by-products, and room to spare for activity items that can be used in conjunction with the online toolkit. Each Georgia Farm Bureau district has one!

WHAT DOES IT INCLUDE?

The online document includes games, activities, lessons, and more for all elementary grade levels while each district's bag contains two books, a down feather pillow, Neutrogena Hydro-Boost Cleanser, and fishing lures.

WHERE CAN I FIND THE MOST UPDATED TOOLKIT DOCUMENT?

Our toolkit is housed online so you can always have the most updated version! Just visit one of the following websites:

- poultry.caes.uga.edu/community-outreach/elementary-level-lessons
- www.gfb.org/ag-in-the-classroom
- www.georgiaagexperience.org

HOW DO I RESERVE THE TRUNK FOR MY SCHOOL/EVENT?

If you're interested in using the trunk please contact your county Farm Bureau Office Manager.



Department of Poultry Science
College of Agricultural & Environmental Sciences
UNIVERSITY OF GEORGIA

